

# INDIA'S FIRST 5 TONNE ELECTRIC FORKLIFT



**MADE IN  
INDIA**   
MADE FOR THE WORLD

- Full AC System and wet disc brakes offer high energy efficiency with very low maintenance costs.
- Designed to work in harsh environment with moisture, heat and dust.
- Powerful, Twin drive motors promise high level of performance and productivity.

## Main Benefits:



### Energy Conservation:

- AC traction and hydraulics offer the highest energy efficiency coupled with virtually maintenance free operation.
- Regenerative braking converts kinetic energy back into electrical energy and stores it in the battery.
- Twin gear boxes with high mechanical efficiency minimize friction losses.



### Safety:

- Complies with IS & ISO standards.
- Forklift automatically slows down while turning corners.
- Anti rollback feature prevents accidental movements on slopes.
- Wet disc brakes deliver superior braking performance with long service intervals.
- Operator presence sensing system.
- Seat belt
- Lifting operations are disabled when battery is discharged to 20% of its capacity, preventing deep discharge & damage to battery.



### Productivity and Performance:

- Twin 11 kW traction motors with independent gear boxes and wet disc brakes guarantee a powerful and responsive drive train.
- Electronic differential enables tight turning radius of 2.8 metres making the truck very maneuverable and suitable for indoor work.
- Heavy duty low noise pump, high manoeuvrability and non polluting power source make it ideal for indoor operations.
- One touch selection of 3 operating profiles - Economy / Standard / High easily configures performance parameter for different applications.
- Low mounted battery enables lifting heavier loads to greater height by increasing the stability of the truck.

# GX500 E

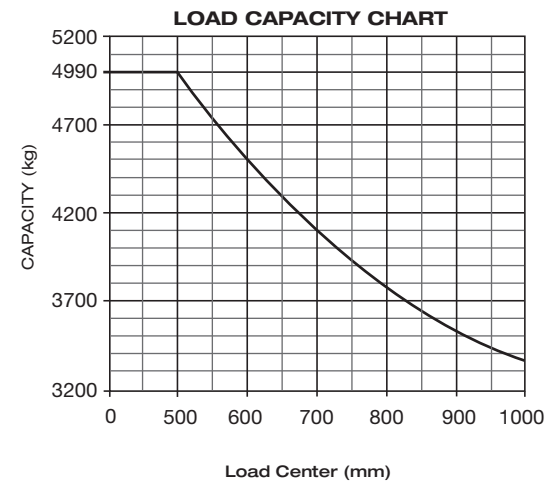
Capacity: 4990 kg at 500 mm LC.

## Mast Dimension Table

Type of mast	Max. Fork height (mm)	Overall ht. lowered (mm)	Overall ht. raised (mm)	Free lift (mm)	Capacity at MFH (kg)
2 Stage Clear View	3660	2620	4450	120	4990
	4500	3040	5290	120	4500
2 Stage FFL	2800	2165	3575	1300	4990
3 Stage FFL	4000	2165	4825	1300	4800
	5500	2665	6325	1800	4200

Overall Height Raised with Load Back Rest = M.F.H + 1200mm;  
FFL = Full Free Lift; LC = Load Center

Note: All dimensions and specification indicated above are subject to a variation of ±15%.



FOR MAST UPTO 3660 MFH

Note: Capacities shown above are computed with mast in vertical position on level ground.

## Standard Accessories:

- Head & Tail Lights
- Signal Lights
- Reverse Alarm
- Rear View Mirror
- Safety Seatbelt
- Operator Presence Sensing System
- Toolkit
- Advanced Instrument Panel
- Solid Tyres
- Tilttable Steering Column

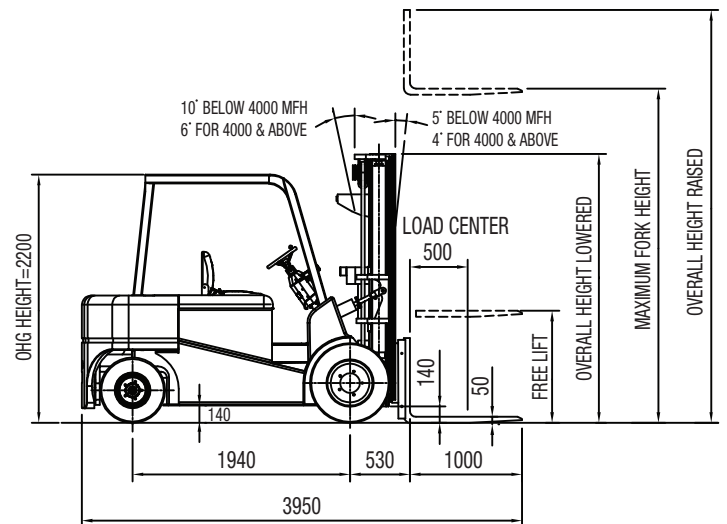
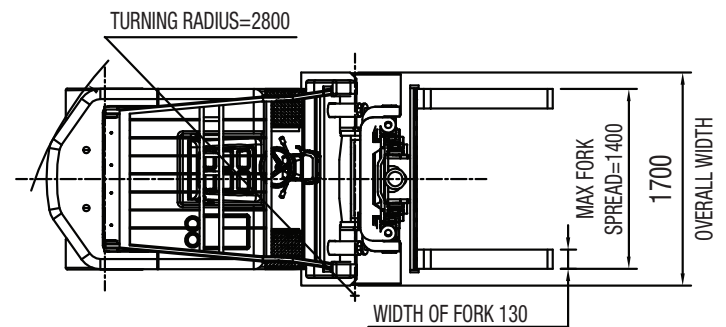
## Options & Accessories:

- Load Back Rest
- Fork Extensions
- Side Shifter
- PRC
- Bale Clamp
- Rotating fork attachment

## Safety Features:

- Lift Lock Out
- Relief Valve & Tilt Lock Valve
- Hose Rupture Valve
- Flow Control Valve
- Anti-Roll back

Drive Motor	2x11 kW
Pump Motor	26 kW
Battery Capacity	80V, 756 Ah
Travel Speed	14 kmph
Max. Gradeability	15%
Max. Draw Bar Pull	1500 kg
Lifting Speed (Loaded)	0.30 m/sec.
Lowering Speed (Loaded)	0.35 m/sec.
Service Weight	8250 kg
Colour	Traffic Yellow & Jet Black



\*The images shown in the leaflet are representative. Actual equipment may differ in colour and optional accessories.



**Head Office Address**  
**GODREJ & BOYCE MFG. CO. LTD.**  
 Plant 16, Pirojshanagar,  
 Vikhroli, Mumbai - 400 079. INDIA  
 Tel: +91 22 6796 4660 / 73  
 Fax: +91 22 6796 1519  
 Email: mhemktg@godrej.com  
 Toll Free Helpline: 1 - 800-22-5454

## Branches & Service Centres

Ahmedabad: 079 6606 0646	Delhi: 011 6650 7348
Bangalore: 080 6647 2251	Guwahati: 03612 468 242
Bhubaneshwar: 0674 2374 627	Hyderabad: 040 6643 1203
Chandigarh: 0172 5012 525	Indore: 0731 4069 335
Chennai: 044 6654 4431/32	Jaipur: 0141 6701 443
Coimbatore: 0422 2545 799	Kochi: 0484 6612 777
Kolkata: 033 6601 3771	Pune: 020 6625 5121
Lucknow: 0522 6754 980	Raipur: 0771 6606 606
Mumbai: 022 6976 1725	Vizag: 0891 2746 511